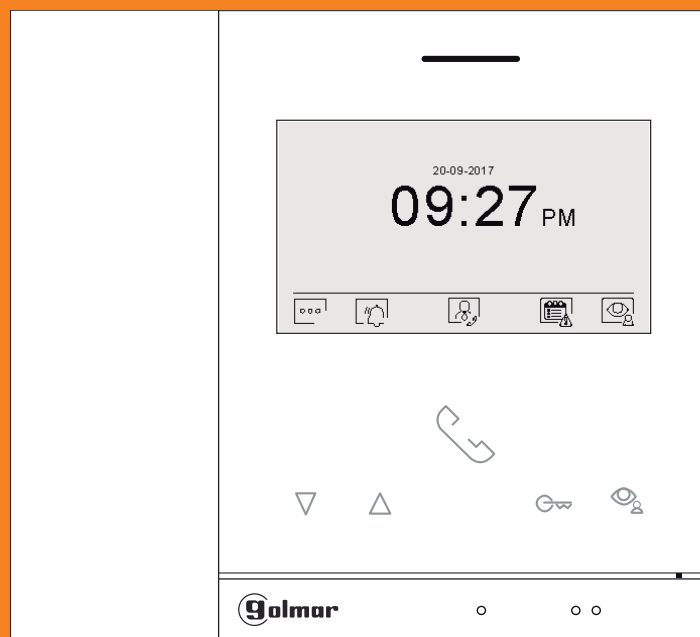




# ART 4TH/G+



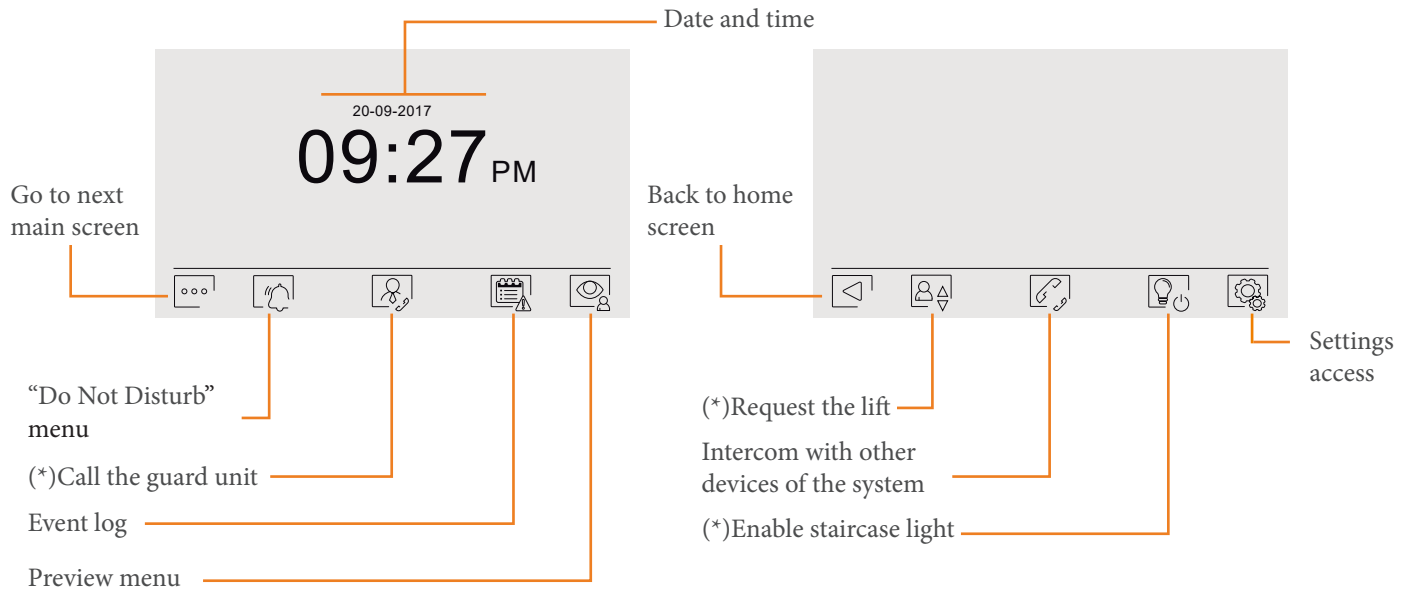
## ΕΓΧΕΙΡΙΔΙΟ ΧΡΗΣΤΗ

**INDEX**

1.Λειτουργία συστήματος .....	3
1.1.Λήψη κλήσης.....	3
1.2.Κατά την επικοινωνία.....	3
1.3.Πραγματοποίηση κλήσης.....	3
2. ....	4
3. ....	4
3.1. “ ” .....	4
3.2. μ .....	4
3.3. ....	6
3.4. ....	6
4. μ .....	7
4.1 μ .....	7
4.2. ....	8
4.2. μ .....	8



## 2. HOME SCREEN



### (\*)QUICK ACCESS ICONS:

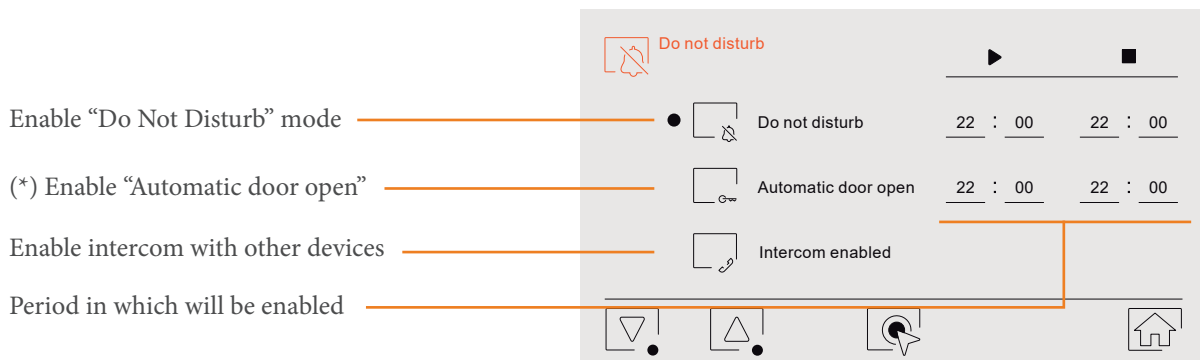
Icons located on the bottom row of the screen are quick access. To be able to use them the corresponding function must be enabled and in some cases have an additional element (guard unit, lift controller, alarm sensor...).

## 3. FUNCTIONS



### 3.1. "Do not disturb" menu.

This function allows to manage the behaviour of the monitor when a notification occurs.

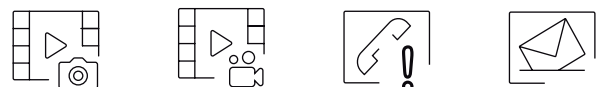


(\*) When "Automatic door open" mode enabled, the monitor will automatically open the door without the need of responding the call from the door panel.



### 3.2. Events.

The events section provides the following options:



These are defined in detail below:



Picture recordings, shows the snapshot log.

Picture recordings				01/03
● 001001	Peter Night	22-08-2020	23:00	
001801	Lobby entrance	12-08-2020	11:55	
001003	Tom Berry	28-07-2020	07:40	
002801	Parking entrance	04-07-2020	13:15	
001851	Concierge	30-06-2020	18:20	

Panel from which the snapshot was made.

Date and time when it was produced.

Shown snapshot.

Back to the previous screen.

Move through the various picture recordings.

Snapshot display

Display the previous or next snapshot.

Individual deletion from snapshot, press and confirm .

Back to the previous screen.



Video recordings, shows the video recordings log.

Video recordings				01/03
● 001001	Peter Night	22-08-2020	23:00	
001801	Lobby entrance	12-08-2020	11:55	
001003	Tom Berry	28-07-2020	07:40	
002801	Parking entrance	04-07-2020	13:15	
001851	Concierge	30-06-2020	18:20	

Panel from which the video was made.

Date and time when it was produced.

Shown recording.

Back to the previous screen.

Move through the various video recordings.

Display the previous or next recording.

Individual deletion from snapshot, press and confirm .

Back to the previous screen.

Play the video.



Missed calls, shows the log of unanswered incoming calls:

Panel from which the call was made.	ID	Name	Date	Time	Date and time when it was produced.
	001001	Peter Night	22-08-2020	23:00	
	001801	Lobby entrance	12-08-2020	11:55	
	001003	Tom Berry	28-07-2020	07:40	
	002801	Parking entrance	04-07-2020	13:15	
	001851	Concierge	30-06-2020	18:20	

Annotations:

- Panel from which the call was made.
- Date and time when it was produced.
- Back to the previous screen.
- Delete lost call.
- Move through the various lost calls.



Messages, displays received messages.

Origin of the message.	ID	Name	Date	Time	Date and time when it was produced.
	001891	South guard	22-08-2020	23:00	
	001001	Peter Night	12-08-2020	11:55	
	001003	Tom Berry	28-07-2020	07:40	
	001852	North guard	04-07-2020	13:15	
	099901	Site guard	30-06-2020	18:20	

Message content:

001851 South guard 22-08-2020 23:00  
Hello. This is Peter.

Annotations:

- Origin of the message.
- Date and time when it was produced.
- Back to the previous screen.
- Delete message.
- Read message.
- Move through the various messages.
- Back to the previous screen.
- Delete message.
- Show the previous or next message.

\*Alarm message.  
IMPORTANT: When receiving an alarm message, the monitor will alert of that on screen and in a sonorous way.



### 3.3. Preview.

Preview the images from the door panels and cameras registered in the system.

Move through the different door panels.	Name	Location
	North entrance	North entrance
	South entrance	South entrance
	Lobby entrance	Lobby entrance
	Parking entrance	Parking entrance
	Parking entrance	Parking entrance

Annotations:

- Move through the different door panels.
- Access to registered cameras list.
- Back to the main screen.
- Preview door panel images.

Move through the different cameras.

Access to door panels list.

Back to the main screen.

Preview camera images.



3.4. Intercom.

To see how to intercom with the monitor, go to the “Make a call” manual section.

4. SETTINGS



Settings.

The settings section provides the following options:



These are defined in detail below:



4.1. Personal: melody selection, volume, leave message...



User.

Move through the fields.

Language selection.

Identification name of the monitor. (the name modification is not instantaneous, it updates at midnight)

Set the code of panel opening. \*The code cannot be repeated or consecutive. Example: 8888 or 1234 would not be valid

Back to the previous screen.



Ringtones.

Move through the fields.

Adjust ringtone volume between 1-5.

Select ringtone between 1-6. (selecting different ringtones allow to differentiate the origin of the call)

Back to the previous screen.

Choose the field to be modified.



Leave message.

Enable Leave message.

Move through the fields.

Start time. Interval in which it will be enabled.

End time.

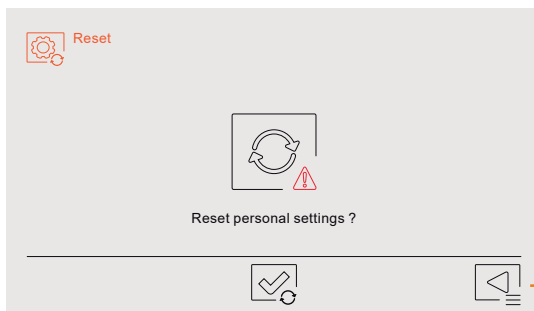
Instant activation or if the call is not answered.

Back to the previous screen.

Choose the field to be modified.



Reset personal settings.

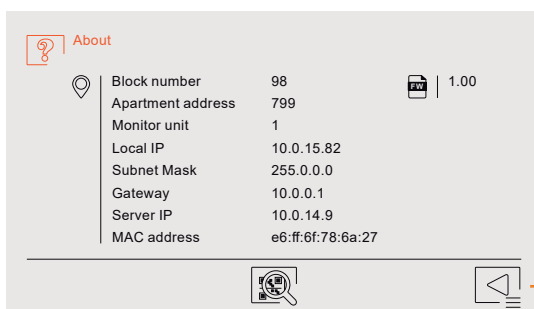


Back to the previous screen

Reset all personal settings.

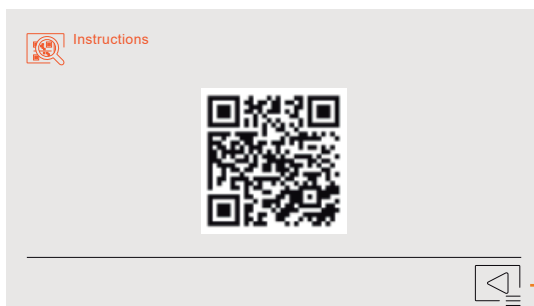


4.2. About: Device information.



Back to the previous screen

Access to the manual QR code.



Back to the about section.



4.3. System: Installer settings.

“System” settings are not detailed in this manual as these are installer settings.



C/ Silici 13. Poligon Industrial Famadas  
08940 – Cornellà del Llobregat – Spain  
[golmar@golmar.es](mailto:golmar@golmar.es)  
Telf: +34 934 800 696  
[www.golmar.es](http://www.golmar.es)